

Methanol/Water Injection (MWI) Kit Installation Guide

Product Number :
VT-8100001 + VT-7700020

Product Name :
VAITRIX BOOSTER Expertise/Plus
Standard Methanol Injection Kit

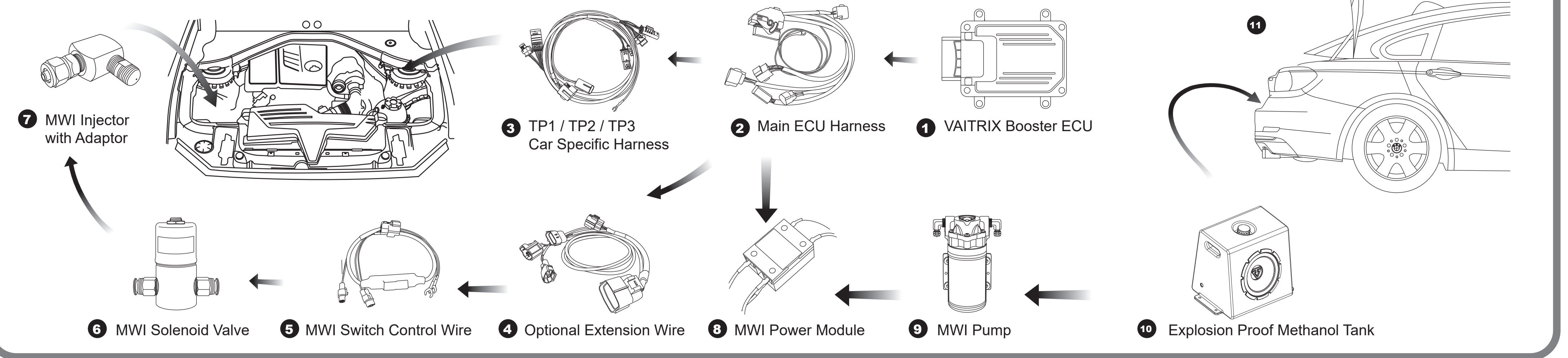
Package Content :

- 400PSI Pump x1
- MWI Injector No.2 (Standard equipped) with Injector Adaptor x1
- Solenoid Valve
- 5 Liter Explosion Proof Methanol Tank
- Power Module with On/Off Switch Function
- TEFLON Reinforced Hose
- Wiring Set

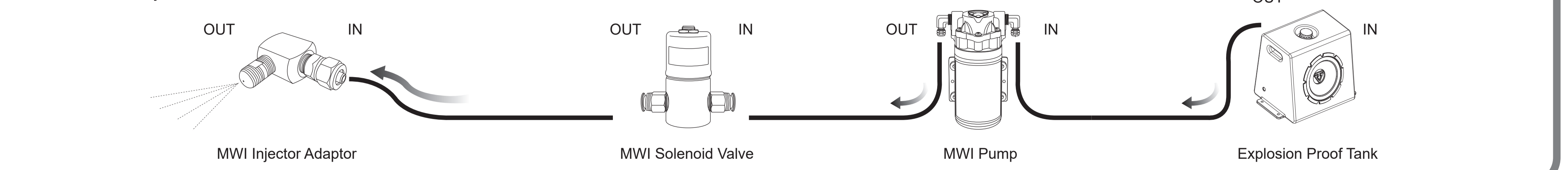
Web. QR Code



MWI Electrical Sub-system Installation Guide



MWI Fluid Sub-system Installation Guide



1 Three models of VAITRIX BOOSTER are recommended to co-work with the VAITRIX MWI Kit :

- VAITRIX BOOSTER Professional (Turbo Pressure and MWI)
- VAITRIX BOOSTER Expertise (Turbo Pressure and MWI)
- VAITRIX BOOSTER M (MWI only)

• Connect the VAITRIX BOOSTER ECU with the Main ECU Harness and make sure they're tightly fitted with each other.

2 [The Main ECU Harness]

- TP1 (6-pin female) & TP2 (6-pin male) – connect to Car-Model Specific Harness
- No.1 (3-pin female) – connect to MWI Power Wire
- No.2 (4-pin female) – connect to USB Tuning Cable / Bluetooth Module
- No.3 (10-pin female) – Extension Wire (optional)
- No.4 (2-pin female) – Bluetooth Module
- ACC+ – connect to anode of car battery

(The Main ECU Harness is in the lower layer of the package)

MWI switch reserved wire for pre-spray(SV)

★ Don't touch +

• ACC+ (Anode)

If you encounter any problem during installation or operation :

- Remove ACC+ from the car battery to restore factory default.
- Remove 20A fuse to restore factory default.

3 • Connect each wire of the Main Harness with the wire of the Car-Model Specific Harness with the same number label one by one.

- Connect the connectors in other end of the Car-Model Specific Harness to various devices in the engine bay. For the exact location of each device, please refer to the Tuning Installation Manual available in VAITRIX website.

[TP1 & TP2 Car-Model Specific Harness] [Main ECU Harness]

• Please refer to the Installation Manual to find the correct location of the CAMSHAFT sensor connector.

• Please refer to the Installation Manual to find the MANIFOLD sensor connector (located downstream the throttle valve) .

• Ground wire of the Main ECU Harness

• Please refer to the Installation Manual to find the BOOST sensor connector (located upstream the throttle valve) .

• Make sure the ground wire is connected to an unpainted metal point.

4 [Optional Extension Wire]

- No.3 – connect to the 10-pin female connector of the Main ECU Harness with the same labeling.
- No.5 – connect to Boost sensor / Intake Temp sensor
- No.7 – connect to Exhaust Temp sensor
- TP3 – connect to Car-model Specific Wire (for special car models with 3rd wire)

5 [MWI Switch Control Wire]

- No.6 – connect to the 3-pin male plug with the same label number on the optional Extension Wire
- SW1 – connect to the MWI Solenoid Valve
- SW2 – connect to the MWI Solenoid Valve (if the optional 2nd valve is available)
- Gnd- – connect to any unpainted metal surface

6 [MWI Solenoid Valve]

- Wrap with sealing tape
- Note the In / OUT

[MWI Switch Control Wire]

7 [MWI Injector with adaptor]

• Caution: Wrap the sealing tape in the opposite direction to the thread

• Intercooler Charge Pipe with injector mounting point is car-model specific. Choose correct model for your car. Note: Before drilling for the injector, make sure the mounting point is upstream the sensor.

• Mounting Spacer is car-model specific. Choose correct model for your car.

8 [MWI Power Module]

9 [MWI Pump]

- Please pay attention to IN / OUT
- Waterproof gaskets need to be placed in the inlet/outlet holes of pump.

10 [Explosion Proof Methanol Tank]

- Please pay attention to OUT. Waterproof gasket need to be placed in the outlet hole of methanol / water tank. Use screws to secure the pump onto the methanol/water tank.

- Please pay attention: Do not fold or press the pipe when installing, otherwise it will damage the pipe structure. Cut the pipe with a knife, scissors will deform the pipe.

11 [Install the tank in the trunk area]

- Methanol storage hole at the top of the tank

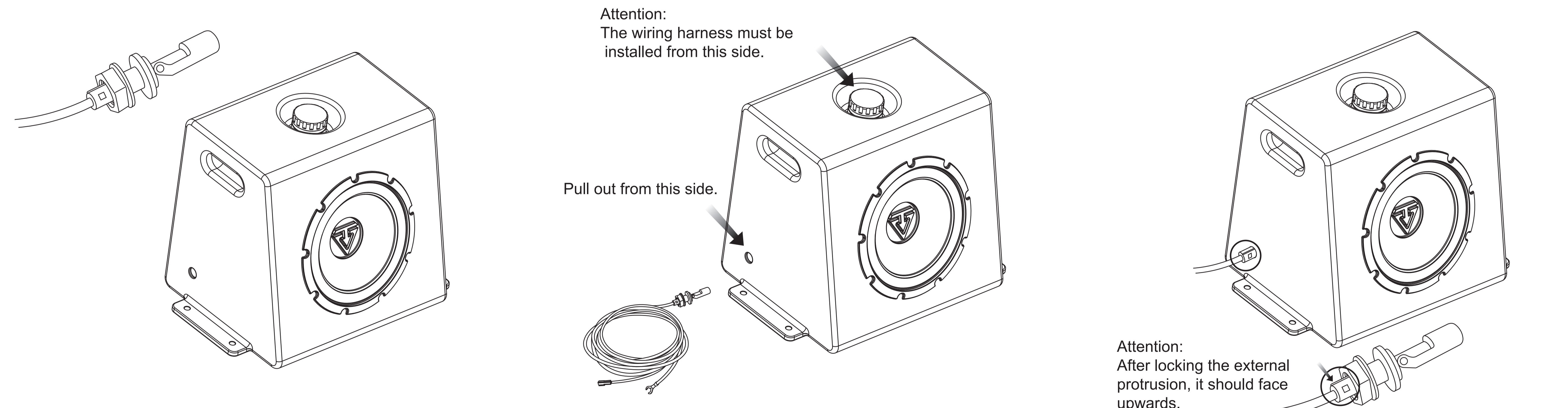
Pump towards the front of the car / logo towards the rear of the car

- ⚠ To prevent damage to the vehicle, please use only higher than RON97 unleaded petrol or high-grade diesel fuel.
- ⚠ Make sure the internet connection is stable when manipulating Airforce system. VAITRIX is not responsible for any damages caused by incorrect data transmission.
- ⚠ To avoid incorrect data transmission and wrong operation, please use only VAITRIX OEM parts.
- ⚠ After installation, maintenance period needs to be shortened. It is suggested to maintain the car every 6 months or 5,000 km.
- ⚠ To avoid damages to an engine and components, it is recommended to replace cold spark plugs every 10,000 km.
- ⚠ Please contact certified VAITRIX technicians or download paid data of corresponding car models while installing the product or adjusting the value.
- ⚠ Do not disturb safety equipments such as seat belt, airbag system or car devices (ex. Engine control system, wheel and brake system.) when installing the product. Disturb above devices may cause unpredictable accidents or fires.
- ⚠ In any case, VAITRIX shall not be responsible for any damage or loss to the factory components after installation of the product.
- ⚠ In any case, VAITRIX shall not be responsible for any damage caused through the use (or not available to use) of the product and even VAITRIX is informed that possible damages may occur.

[Optional]

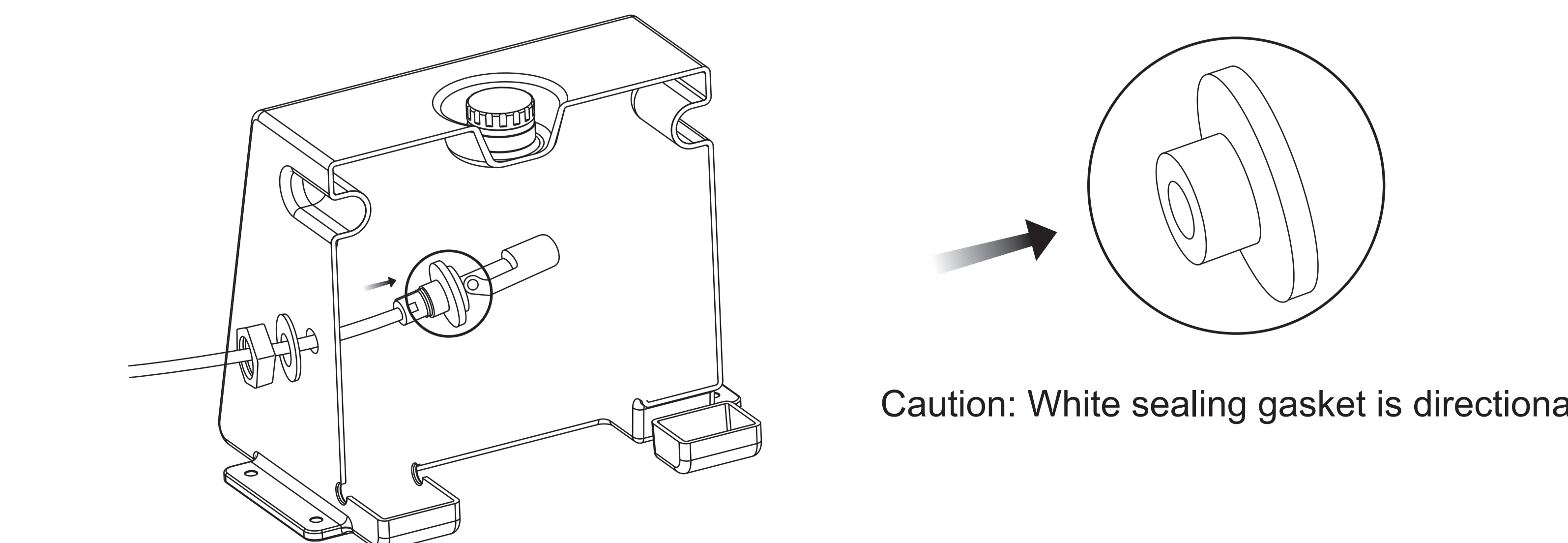
★ VAITRIX AirForce GO Bluetooth application Switching by just one click in the app. Please switch the program in the range of excellent network signal.

Key Point of Install Liquid level sensor (optional)



External Diagram

Water tank water level and gauge display



Internal Diagram

